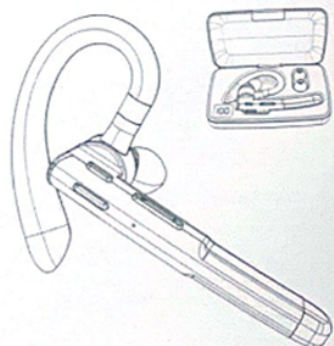
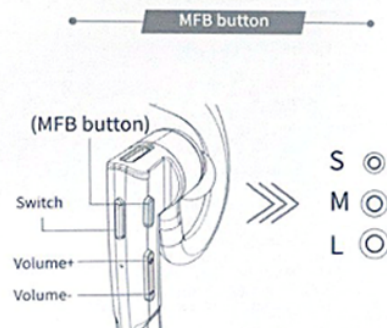
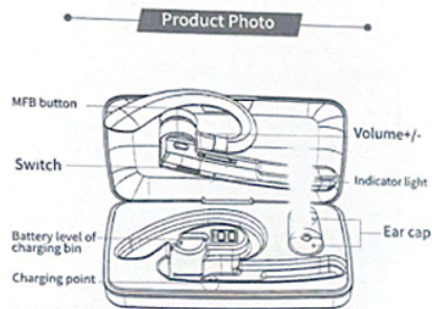


User Manual

Product description

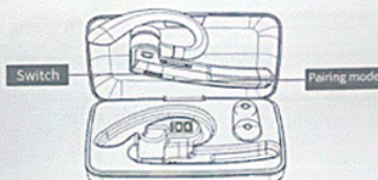


YYK-520
Wireless business headset



Product Photo

Wireless Pairing

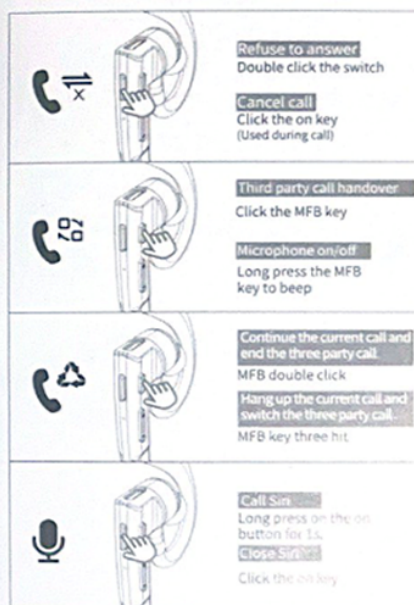
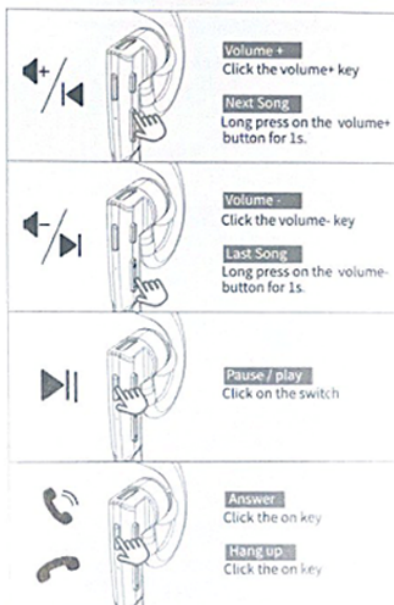


Make sure the headset is off, press and hold the multifunction key for about 3 seconds until the blue light comes on once, then the red and blue lights flash alternately (at this time it enters the pairing state) and waits for the connection.



Turn on the Wireless function of the user's mobile phone (or other Wireless devices), and search or scan. At this time, the mobile phone will search all the Wireless devices nearby, and click the Headset Name: YYK-520, and enter the password 0000 (most mobile phones do not need a password at present). After successful pairing and connection, the headset indicator light goes off, indicating that the pairing connection is successful! At this time, you can make mobile phone calls and listen to songs.

MFB Button



ON/OFF switch

1. In the first time use, take the earbuds from the charging bin and peel off the protective film. Once put into the charging bin, the earbuds will turn off and initiate recharging automatically. When taken out from the charging bin, the earbuds will turn on automatically.
2. After use, put the earbuds into the charging bin, and it will turn off automatically.

How to pair

1. Take the earbuds out of the charging bin and it will start work automatically.
2. The red and blue lights will flash alternately (entering pairing mode).
3. Access the Settings of mobile phone/tablet - Wireless - Search - YYK-520 - Pair/Connect - Play music.

Pair with PC/Laptop

Turn on the computer Settings-Devices-Wireless and Other Devices - Initiate Wireless - Add Wireless or Other Devices - Search Wireless - YYK-520 - Pair/Connect - Play music.

Pair with Echo Dot

Activate Alexa App - Settings - Add New Devices - Wireless - Pairing New Devices - Search Devices - YYK-520 - Pair/Connect - Play music.

How to reset?

When the headset is off, press the on / off key for 8 seconds. Put the headset into the charging compartment, and the headset will automatically turn off and start charging. After taking out the headset, the headset will turn on automatically, and the reset is completed.

How to recharge the earbuds

1. Put the headset in the charging bin, the headset will be automatically turned off and then charged.
2. The display lights up to show the current power of the charging chamber, indicating that the charging chamber is charging the headset.
3. When the headset is fully charged, the red light of the headset indicator will be off.

How to recharge the charging bin

1. Please use a mobile phone adapter to recharge the charging bin. You may charge via a Type-C cable connected to a computer, or other charger with a Type-C interface.
2. The digital display of the charging bin will indicate the recharging process, and 100% battery level means fully recharged.

Product specification

Version	V5.1
Wireless support	A2DP, AVRCP, HFP, HSP, EDR
Communication range	≥ 10m
Frequency band	2.402GHz-2.480GHz
Electrical impedance	13Ω ± 10%
Standby time	180h
Call time	8-10h
Music playing time	8-10h
Earbuds battery capacity	60mAh
Host battery capacity	500mAh
Charging bin recharging time	About 1.5h
Charging time of headset	About 1.5h
Weight	71g

Waterproof specification

Waterproof in daily activities (including sweating, raining, face-washing and showering, except swimming in water, etc.)

*Note that the Wireless signal of mobile phones can't be transmitted in water.



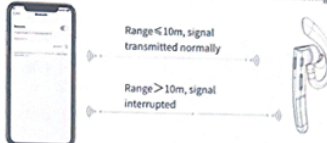
Above water



In water

Mobile phone transmission range

The transmission distance of the mobile phone is shown in the following chart



Attention

1. Please avoid disassemble/reassemble the product in case of failure or fire accident.
2. Please keep away from corrosive liquids to prevent the product from damage.
3. Please avoid exposure to extreme temperatures below 10°C, or above 60°C.
4. Please keep beyond the reach of kids or pets.
5. Please mind contact with sharp objects to avoid scratch.
6. Please avoid use in thundering and raining days to prevent damage or electrical shock.
7. In the case of non-use for above a month, please charge regularly for maintenance.
8. As the Wireless signal cannot transmit in water, it is not suitable for swimming for diving.

Why cannot I detect Wireless?

1. The Wireless range is 10m; please ensure no obstacles and place the mobile phone close to the earbuds.

2. If the earbuds are connected to other mobile phone or devices, please disconnect first.
3. Please reboot the Wireless device and reset the earbuds.

Why do the earbuds produce no sound? Or, why does the music playing stop?

1. Please ensure the charging cable or mobile phone charger is in a good state and with proper connection.
2. To ensure proper connection, press the earbuds to fully connect the charging points to the charging bin.
3. The earbud charging points might be stained with dust or sweat. When place them into the charging bin for recharging, please clean with alcohol or cloth.
4. Please wipe the sweat on the earbuds before putting into the charger, and the indicator lights will turn on.

Why do the earbuds turn off automatically?

Please ensure sufficient battery level. In addition, the earbuds will automatically disconnect Wireless for 10mins. Place the earbuds back to the charging bin and they will restart after recharging.

Why cannot I recharge the charging bin?

1. Please ensure the charging cable or mobile phone charger is in a good state and with proper connection.
2. To ensure proper connection, press the earbuds to fully connect the charging points to the charging bin.
3. The earbud charging points might be stained with dust or sweat. When place them into the charging bin for recharging, please clean with alcohol or cloth.
4. Please wipe the sweat on the earbuds before putting into the charging bin, and the indicator lights will turn on.
5. Once the prompt tone "Battery Low" appears, please recharge the earbuds. When the number displayed by the LED lights on the charging bin reaches "10", please recharge the charging bin. Please pay attention to not using up the battery of the earbuds and charging bin, as it may shorten the service life of the built-in lithium battery.

Safety Precautions

To guarantee the service life of the quality earbuds, please refer to the instructions as follows:

1. Please keep away from high temperature, high humidity and corrosive environment.
2. Please avoid bumping, falling, bending, soaking, and etc.
3. Please do not disassemble the earbuds or charging bin.
4. Please do not overcharge for a long time, which will shorten the service life.
5. In the case of feeling any discomfort or pain, please stop using the product.
6. Please use certified DC 5V-1A adaptor from manufacturer under the supervision of regulatory authorities. Repeated charging and discharging will impair the battery performance over time, which is normal for all rechargeable electronic products.

Packing Contents

1. Earbuds * 1
2. Charger * 1
3. Type-C charging cable * 1
4. Earbuds cap * 2
5. User Manual * 1